

**KryptoMax®**

**6-Seat Stainless Steel Square Stool Prison Table**

Model: KM-SPT-6R-SQ

[www.KryptoMax.com](http://www.KryptoMax.com)



**KRYPTOMAX**

BY G2 AUTOMATED TECHNOLOGIES, LLC

### Description:

This 6 person intensive use prison table features a 12 gauge stainless steel rectangular top and square stool tops with a brushed finish. The pedestal supports are 3" square stainless steel tubing and can be purchased with optional finishes. ¼" thick floor mounting plates at the base of each stool have four ½" diameter mounting holes on each plate. G2 offers a full line of prison furniture and intensive use detention furniture for a variety of security applications.

### Specifications:

Dimensions: 72" L x 60" W (Stool Edge to Stool Edge) x 30" H (Seats-18"H)

Table Top Dimensions: 72" L x 34" W

Dimensions can be customized for your specifications.

Solid 304 Stainless Steel Single Piece Construction

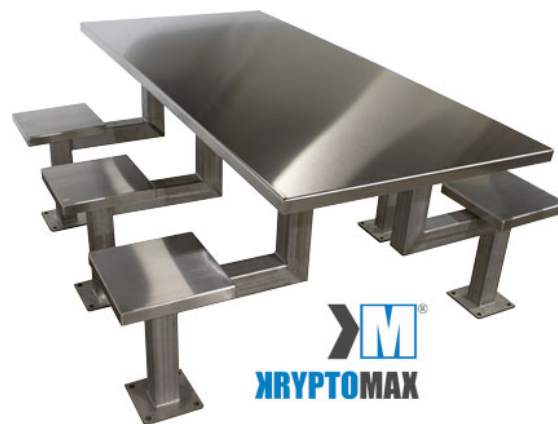
Seats and Top Material: 12 Ga. 304 #4 Brushed Stainless Steel

Table Top Features 1 1/2" Flange

Seats: 12 Ga. 12" x 12" Square Stainless Steel Seats

Pedestals and Posts: 3" Square Stainless Steel Tubing

Floor Plates: 7.25" x 7.25" x 3/8" Steel Base Plates



**KM-SPT-6R-SQ**

### Additional Recommendations:



**KM-BHA-3/8X31/4-Z**

**KryptoMax® 3/8" Tamper Resistant Security Anchors**



**KM-SPT-8REC**

**KryptoMax® 8 Seat Rectangle Prison Table**



**KM-SPT-6**

**KryptoMax® 6 Seat Round Prison Table**

G2 AUTOMATED TECHNOLOGIES LLC • 10500 METRIC DRIVE SUITE 122 • DALLAS TEXAS 75243

Email: [Sales@g2at.com](mailto:Sales@g2at.com) • Web: [www.KryptoMax.com](http://www.KryptoMax.com) • Tel: 972-479-0699 • Fax: 972-479-0717

KryptoMax is a Registered Trademark of G2 Automated Technologies LLC • Copyright 2019 • All Rights Reserved  
Product images and part numbers are for illustrative purposes only and may differ from the actual product.