

KryptoMax®

## Stainless Steel Wall Mount Stool

Model: KM-WMS

[www.KryptoMax.com](http://www.KryptoMax.com)



### Description:

Based off our standard floor mount stool, this compact wall mount design is typically integrated into court rooms, visitation areas, phone booths and cells. Constructed with 7 gauge 304 stainless steel. The 12" round top includes a reinforced base plate secured to a 2" schedule 40 pipe and mounting plate. This model comes standard in stainless steel, but is also available with a gray or black painted base.

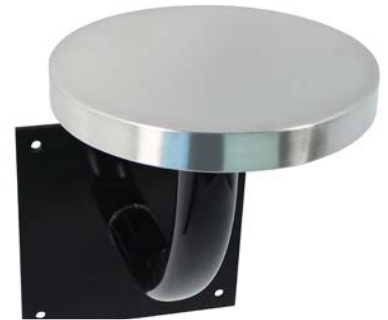
The KryptoMax® line of products by G2 Automated Technologies, LLC, offers a wide variety of solutions for correctional facilities, detention centers, jails, and prisons. These solutions include intensive-use accessories, fixtures, furniture, and replacement parts. If you require an individual item to replace on an existing product, we can provide it for you. We also offer a wide variety of mounting hardware, concrete anchors, tamper proof hardware, and tools, to help with installation of intensive use detention furniture.

### Specifications:

DIMENSIONS: 21.75" x 15.75"H (Overall)

Seat Top: 12" x 1 1/2" Lip. 7 Ga. 304 Stainless Steel

Pedestal: 2" Schedule 40 (2 3/8" OD) Stainless Steel Pedestal



**KM-WMS**  
(Powder Coated Base Pictured)



### Additional Recommendations:



**KM-BHA-1/2X31/4-Z**

KryptoMax® 1/2" Tamper  
Resistant Concrete Anchors



**KM-FMS**

KryptoMax® Floor Mount  
Stool



**KM-FMS-FWM**

KryptoMax® Floor and Wall  
Mount Stool

G2 AUTOMATED TECHNOLOGIES LLC • 10500 METRIC DRIVE SUITE 122 • DALLAS TEXAS 75243

Email: [Sales@g2at.com](mailto:Sales@g2at.com) • Web: [www.KryptoMax.com](http://www.KryptoMax.com) • Tel: 972-479-0699 • Fax: 972-479-0717

KryptoMax is a Registered Trademark of G2 Automated Technologies LLC • Copyright 2018 • All Rights Reserved