

KryptoMax®

Stainless Steel Wall Mount Stool

Model: KM-WMSS

www.KryptoMax.com



Description:

KryptoMax® wall mount swivel stools provide an option for locations with limited floor space. Constructed with 7 gauge 304 stainless steel. The 12" round top includes a reinforced base plate secured to a 2" schedule 40 pipe and mounting plate. This model comes standard in stainless steel, but is also available with a gray or black painted base. These stools are typically used in conjunction with G2's GAT-WMD-100 (Wall Mount Desk)

The KryptoMax® line of products by G2 Automated Technologies, LLC, offers a wide variety of solutions for correctional facilities, detention centers, jails, and prisons. These solutions include intensive-use accessories, fixtures, furniture, and replacement parts. If you require an individual item to replace on an existing product, we can provide it for you. We also offer a wide variety of mounting hardware, concrete anchors, tamper proof hardware, and tools, to help with installation of intensive use detention furniture.

Specifications:

DIMENSIONS:

Seat Top: 12" x 1 1/2" Lip. 7 Ga. 304 Stainless Steel

Pedestal: 2" Schedule 40 (2 3/8" OD) Stainless Steel Pedestal

Mounting Plate: 12 Ga. 304, 1/4" x 7.25" x 19"



KM-WMSS
(Powder Coated Base Pictured)

Additional Recommendations:



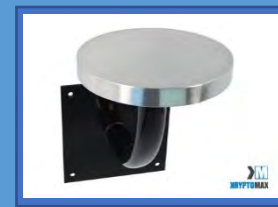
KM-BHA-1/2X31/4-Z

**KryptoMax® 1/2" Tamper
Resistant Concrete Anchors**



KM-SH-183012

**KryptoMax®
Stainless Steel Shelf**



KM-WMS

**KryptoMax®
Wall Mount Stool**

G2 AUTOMATED TECHNOLOGIES LLC • 10500 METRIC DRIVE SUITE 122 • DALLAS TEXAS 75243

Email: Sales@g2at.com • Web: www.KryptoMax.com • Tel: 972-479-0699 • Fax: 972-479-0717

KryptoMax is a Registered Trademark of G2 Automated Technologies LLC • Copyright 2018 • All Rights Reserved