

KryptoMax® Double Detention Bunk

Model: KM-DDB

WWW.Kryptomax.com



By G2 Automated Technologies, LLC.

Description:

KryptoMax® double detention bunks are designed to meet multiple requirements for prisons, jails and other high security intensive use detention environments. This double bunk design works great for small cells and other applications where floor space is at a premium. The frames are constructed of sturdy 1/8" 2" x 4" angle stainless, and integrated floor mounting feet. The pan is 27" x 80" and constructed with 12 gauge stainless steel. These bunks come knocked down and require on-site assembly. Fully welded bunks are also available. Constructed with stainless steel, this bunk will provide years of practical use without the typically wear and tear of standard powder coated or painted bunks. These bunks can be integrated with storage cubbies, integrated ladders, but are also available with a powder coat finish. Custom sizes available.

Specifications:

DIMENSIONS: 27"D x 80"W x 53"H (Bottom Bunk at 17.5"H)

Mattress Pan: 12 Gauge 304 Stainless Steel (Ventilation Holes Optional)

Legs: 12 Gauge 2" x 2" Angle Stainless Steel

Anchor Plates: 2" x 4" 12 Ga. Plate with 1/2" Dia. Holes for Expansion Bolts

Floor Mount or Stand Alone Design



KM-DDB

Additional Recommendations:



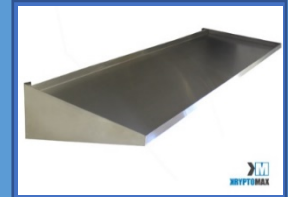
GAT-BHA-1/2X31/4-Z

KryptoMax® 1/2" Tamper
Resistant Concrete Anchors



GAT-SDB-100

KryptoMax® Single Detention
Bunk



GAT-WMB-100

KryptoMax® Wall Mount
Detention Bunk

G2 Automated Technologies / 10500 Metric Drive, STE 122 / Dallas, TX 75243

Tel: 972-479-0699 / Fax: 972-479-0717

Sales @g2at.com