

KryptoMax® 6-Person Stainless Steel Rectangular Detention Table with Bench Seats

Model: KM-SPT-8R-PTD

(ALT PART: GAT-SPT-100-8REC-PTD)

www.KryptoMax.com



KRYPTOMAX

BY G2 AUTOMATED TECHNOLOGIES, LLC

Description:

This 8-person intensive use prison table features a 12-gauge stainless steel rectangular top and bench-style seating. The pedestal supports are 2" x 4" rectangular stainless steel tubing with four 1/4" thick floor mounting plates at the base of each bench. Standard four 1/2" diameter mounting holes on each plate are available for securely mounting the table to the floor.

Specifications:

Overall Dimensions: 60" W (Bench Edge to Bench Edge) x 75" L x 30" H

Tabletop Dimensions: 36" W x 75" L x 30" H

Bench Seating Dimensions: 12" W x 75" L x 18" H

Dimensions can be customized for your specifications.

Bench Seats and Top Material: 12 Gauge 304 #4 Polished Stainless Steel

1-1/2" Flange Edge on Bench and Table Tops

Pedestals and Posts: 2" x 4" Rectangular Stainless Steel Tubing

Floor Plates: 4" x 8" x 1/4" Stainless Steel Base Plates

Solid 304 Stainless Steel Single Piece Construction

Four 1/2" Diameter Mounting Holes on Each Floorplate



KM-SPT-8R-PTD

(Alt Part Num: GAT-SPT-100-8REC-PTD)



Additional Recommendations:



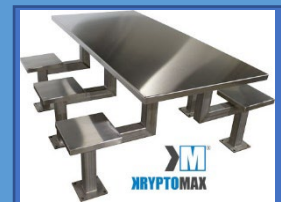
KM-BHA-3/8X31/4-Z

KryptoMax® 3/8" Tamper Resistant Security Anchors



KM-SPT-8REC

KryptoMax® 8 Seat Rectangle Prison Table



KM-SPT-6R-SQ

KryptoMax® 6 Seat Rectangular Prison Table with Square Stools

G2 AUTOMATED TECHNOLOGIES LLC • 10500 METRIC DRIVE SUITE 122 • DALLAS TEXAS 75243

Email: Sales@g2at.com • Web: www.KryptoMax.com • Tel: 972-479-0699 • Fax: 972-479-0717

KryptoMax is a Registered Trademark of G2 Automated Technologies LLC • Copyright 2022 • All Rights Reserved

Product images and part numbers are for illustrative purposes only and may differ from the actual product.